

# **THE NCS<sup>TM</sup>**

## **The National Community Survey<sup>TM</sup>**

### **Pasco, WA**

*Comparisons by Geographic Subgroups*

*2019*



2955 Valmont Road Suite 300  
Boulder, Colorado 80301  
n-r-c.com • 303-444-7863



*Leaders at the Core of Better Communities*

777 North Capitol Street NE Suite 500  
Washington, DC 20002  
icma.org • 800-745-8780

# Summary

The National Community Survey™ (The NCS™) is a collaborative effort between National Research Center, Inc. (NRC) and the International City/County Management Association (ICMA). The survey and its administration are standardized to assure high quality research methods and directly comparable results across The NCS communities. Communities conducting The NCS can choose from a number of optional services to customize the reporting of survey results. Pasco's Comparisons by Geographic Subgroups is part of a larger project for the City and additional reports are available under separate cover. This report discusses differences in opinion of survey respondents by Council Districts.

Six Council Districts were tracked for comparison and the number of completed surveys for each are in the figure below.

Figure 1: Geographic Areas

Council Districts	Number of Completed Surveys
District 1	13
District 2	22
District 3	60
District 4	35
District 5	54
District 6	23

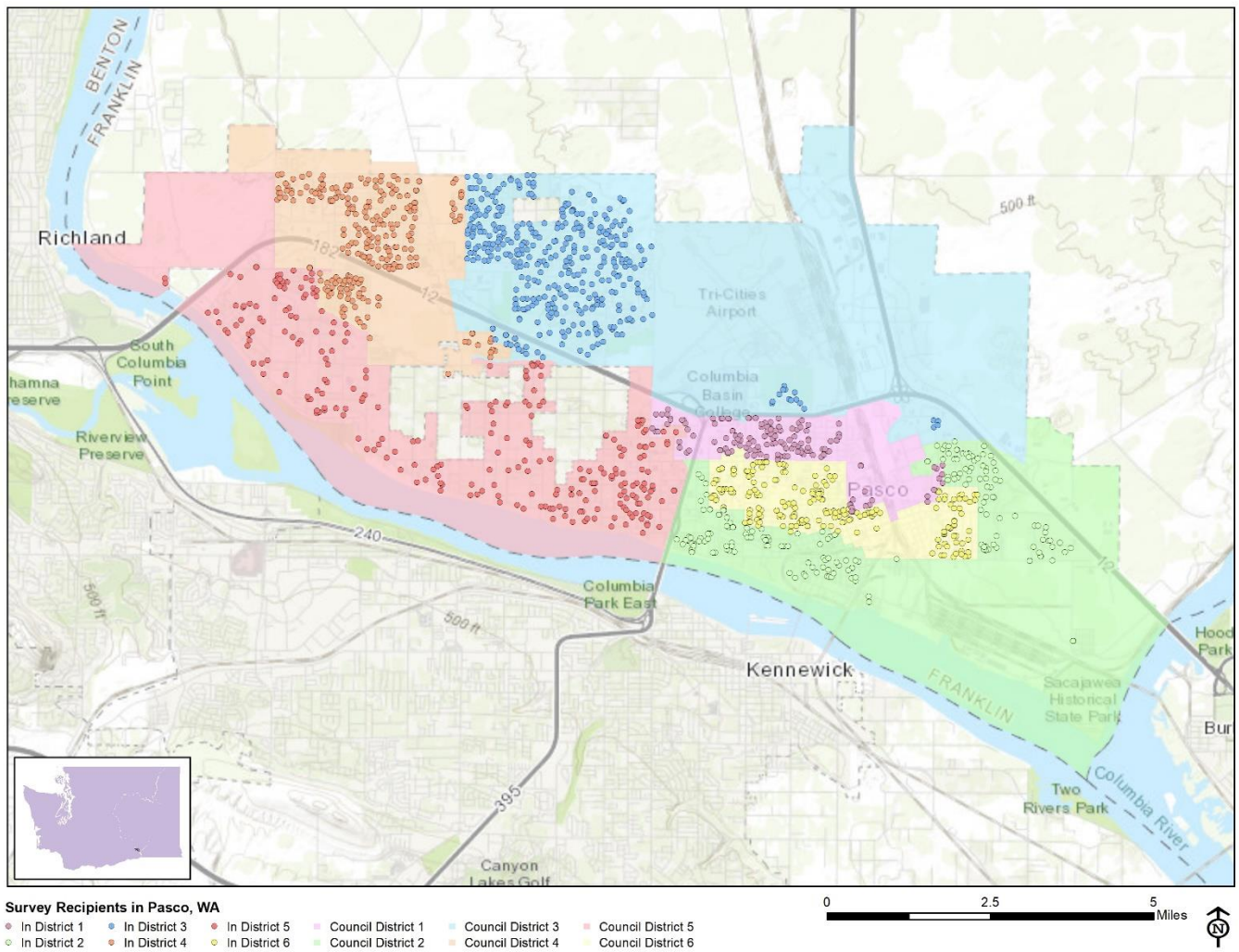


The National Community Survey™  
© 2001-2020 National Research Center, Inc.

The NCS™ is presented by NRC in collaboration with ICMA.

NRC is a charter member of the AAPOR Transparency Initiative, providing clear disclosure of our sound and ethical survey research practices.

Figure 2: Location of Survey Recipients



## Understanding the Tables

For most of the questions, one number appears for each question. Responses have been summarized to show only the proportion of respondents giving a certain answer; for example, the percent of respondents who rated the quality of life as “excellent” or “good,” or the percent of respondents who participated in an activity at least once. It should be noted that when a table that does include all responses (not a single number) for a question that only permitted a single response does not total to exactly 100%, it is due to the common practice of percentages being rounded to the nearest whole number.

The subgroup comparison tables contain the crosstabulations of survey questions by Council District. Chi-square or ANOVA tests of significance were applied to these breakdowns of survey questions. A “p-value” of 0.05 or less indicates that there is less than a 5% probability that differences observed between groups are due to chance; or in other words, a greater than 95% probability that the differences observed in the selected categories of the sample represent “real” differences among those populations. As subgroups vary in size and each group (and each comparison to another group) has a unique margin of error, statistical testing is used to determine whether differences between subgroups are statistically significant.

Each column in the following tables is labeled with a letter for each subgroup being compared. The “Overall” column, which shows the ratings for all respondents, also has a column designation of “(A)”, but no statistical tests were done for the overall rating.

For each pair of subgroup ratings within a row (a single question item) that has a statistically significant difference, an uppercase letter denoting significance is shown in the cell with the larger column proportion. The letter denotes the subgroup with the smaller column proportion from which it is statistically different. Subgroups that have no uppercase letter denotation in their column and that are also not referred to in any other column were not statistically different.

For example, in Table 1 below, respondents in District 2 (B), District 4 (D), and District 6 (F) gave significantly more support for using public funds to help pay for public art projects than respondents in District 3 (C) and District 5 (E), as denoted by the “C E” listed in the cell of the ratings for Districts 2, 4, and 6.

Table 1: Example from Pasco on Support for Public Arts Projects

Percent rating positively (e.g., strongly support/somewhat support).	District 1	District 2	District 3	District 4	District 5	District 6	(A)
	(A)	(B)	(C)	(D)	(E)	(F)	
Pasco recently formed an Arts and Culture Commission. The Commission will be responsible for finding funding and resources to create several public art projects. To what extent do you support or oppose using public funds to help pay for public art projects?	76%	98% C E	69%	90% C E	64%	89% C E	78%

Table 2: Quality of Life

Percent rating positively (e.g., excellent/good, very/somewhat likely)	City Council District						Overall
	District 1	District 2	District 3	District 4	District 5	District 6	(A)
	(A)	(B)	(C)	(D)	(E)	(F)	
Overall image or reputation of Pasco	15%	45% A F	34%	54% A F	36%	16%	35%
The overall quality of life in Pasco	41%	37%	82% A B F	70% A B F	66% A B	43%	61%
Pasco as a place to live	47%	97% A	84% A	83% A	95% A	96% A	85%
Recommend living in Pasco to someone who asks	75% F	96% C F	75% F	82% F	85% F	51%	78%
Remain in Pasco for the next five years	63%	100% A F	83% F	82%	85% A F	64%	81%

Table 3: Governance

Percent rating positively (e.g., excellent/good)	City Council District						Overall
	District 1	District 2	District 3	District 4	District 5	District 6	(A)
	(A)	(B)	(C)	(D)	(E)	(F)	
Overall confidence in Pasco government	62% F	39%	52% F	44%	40%	18%	43%
The overall direction that Pasco is taking	73% D	64%	54%	40%	52%	68% D	56%
The value of services for the taxes paid to Pasco	74% C E F	51%	48%	65% E F	39%	27%	50%
Generally acting in the best interest of the community	53%	57% F	51%	61% F	48%	25%	51%
Being honest	23%	53%	54% A F	65% A F	58% A F	25%	51%
Being open and transparent to the public	45%	39%	48%	57% F	47%	26%	46%

## The National Community Survey™ - Geographic Subgroup Report

Percent rating positively (e.g., excellent/good)	City Council District						Overall
	District 1	District 2	District 3	District 4	District 5	District 6	(A)
	(A)	(B)	(C)	(D)	(E)	(F)	
Informing residents about issues facing the community	22%	20%	49% B	54% A B	43%	29%	40%
The job Pasco government does at welcoming resident involvement	22%	60% A D	55% A D	26%	57% A D	62% A D	49%
Treating all residents fairly	45%	18%	43% B	71% B C	47% B	48% B	45%
Treating residents with respect	45%	58%	55%	76% A F	73% A F	43%	60%
Overall customer service by Pasco employees (police, receptionists, planners, etc.)	45%	61%	74% A E F	73% A E F	46%	46%	59%
Public information services	66% F	60% F	53%	64% F	54%	27%	55%
The City of Pasco	73% F	77% E F	72% E F	70% F	50% F	26%	62%
The Federal Government	37%	69% A D E F	48% F	28%	30%	14%	39%

**Table 4: Economy**

Percent rating positively (e.g., excellent/good, very/somewhat positive)	City Council District						Overall
	District 1	District 2	District 3	District 4	District 5	District 6	(A)
	(A)	(B)	(C)	(D)	(E)	(F)	
Overall economic health of Pasco	17%	79% A C F	59% A	69% A	86% A C F	50% A	63%
Economic development	38%	84% A C F	44%	63% F	68% A C F	28%	55%
Overall quality of business and service establishments in Pasco	11%	97% A C E F	56% A	76% A C F	56% A	49% A	59%
Variety of business and service establishments in Pasco	9%	66% A	56% A	63% A	64% A	46% A	54%

## The National Community Survey™ - Geographic Subgroup Report

Percent rating positively (e.g., excellent/good, very/somewhat positive)	City Council District						Overall (A)
	District 1	District 2	District 3	District 4	District 5	District 6	
	(A)	(B)	(C)	(D)	(E)	(F)	
Vibrancy of downtown/commercial area	30%	17%	22%	43% B C	28%	47% B C	29%
Shopping opportunities	37%	56% D F	36%	25%	36%	23%	35%
Pasco as a place to visit	10%	35%	53% A D E F	25%	28%	24%	33%
Pasco as a place to work	48%	61% F	69% F	48%	67% F	25%	56%
Employment opportunities	15%	75% A C D E F	46% A	45% A	50% A	46% A	47%
Cost of living in Pasco	11%	55% A F	68% A E F	50% A F	43% A F	16%	45%
What impact, if any, do you think the economy will have on your family income in the next 6 months? Do you think the impact will be:	41% F	64% C D E F	40% F	36% F	36% F	9%	38%
NOT under housing cost stress	16%	68% A F	58% A F	75% A F	58% A F	20%	52%

Table 5: Mobility

Percent rating positively (e.g., excellent/good, yes in the last 12 months)	City Council District						Overall (A)
	District 1	District 2	District 3	District 4	District 5	District 6	
	(A)	(B)	(C)	(D)	(E)	(F)	
Overall quality of the transportation system (auto, bicycle, foot, bus) in Pasco	41%	74% A C	49%	63%	66%	50%	57%
Traffic flow on major streets	74% B C D E F	46%	30%	28%	44%	42%	41%
Ease of travel by car in Pasco	74%	92% C F	69%	77% F	78% F	52%	74%

The National Community Survey™ - Geographic Subgroup Report

Percent rating positively (e.g., excellent/good, yes in the last 12 months)	City Council District						Overall
	District 1	District 2	District 3	District 4	District 5	District 6	(A)
	(A)	(B)	(C)	(D)	(E)	(F)	
Ease of travel by public transportation in Pasco	90% B C D F	48%	50%	56%	88% B C D F	49%	62%
Ease of travel by bicycle in Pasco	8%	35%	60% A B D	29%	60% A B D	60% A D	44%
Ease of walking in Pasco	18%	39%	56% A D	29%	67% A B D	72% A B D	49%
Ease of public parking	67%	89% C E	63%	67%	49%	73% E	66%
Bus or transit services	83% D F	97% C D E F	67%	54%	69%	51%	70%
Traffic enforcement	38%	61% F	49% F	68% A F	76% A C F	23%	55%
Traffic signal timing	66% C F	53%	40%	48%	70% C F	34%	51%
Street repair	66% E	43%	45%	73% B C E	30%	62% E	51%
Street cleaning	65% E	57%	70% E	67% E	34%	47%	57%
Street lighting	65% E F	46%	62% E F	78% B E F	30%	36%	53%
Snow removal	37%	42%	49% D	25%	51% D	39%	42%
Sidewalk maintenance	36%	58%	68% A E F	66% A E F	38%	39%	53%
Used bus, rail, subway, or other public transportation instead of driving	86% C D E F	64% C D E F	12%	14%	33% C	20%	33%
Carpooled with other adults or children instead of driving alone	96% C D E	82% C D E	36%	38%	37%	80% C D E	55%
Walked or biked instead of driving	87% B C D E F	47% F	52% F	40% F	59% F	11%	49%

Table 6: Community Design

Percent rating positively (e.g., excellent/good)	City Council District						Overall
	District 1	District 2	District 3	District 4	District 5	District 6	(A)
	(A)	(B)	(C)	(D)	(E)	(F)	
Overall design or layout of Pasco's residential and commercial areas (e.g., homes, buildings, streets, parks, etc.)	60%	58%	40%	58%	40%	72%	51%
						C E	
Overall appearance of Pasco	37%	45%	51%	65%	46%	68%	52%
				A		A	
Your neighborhood as a place to live	41%	59%	98%	81%	94%	57%	77%
			A B D F	A B F	A B F		
Overall quality of new development in Pasco	37%	85%	54%	59%	64%	77%	62%
		A C D			A	A C	
Well-planned residential growth	67%	54%	39%	55%	39%	22%	45%
	C E F	F		F			
Well-planned commercial growth	65%	87%	29%	26%	41%	26%	43%
	C D F	C D E F					
Well-designed neighborhoods	65%	31%	59%	67%	49%	43%	53%
	B		B	B			
Preservation of the historical or cultural character of the community	65%	73%	37%	72%	40%	25%	50%
	C E F	C E F		C E F			
Public places where people want to spend time	1%	42%	34%	28%	24%	48%	30%
		A	A	A		A E	
Variety of housing options	9%	34%	41%	71%	69%	28%	44%
			A	A B C F	A B C F		
Availability of affordable quality housing	8%	39%	49%	37%	54%	11%	36%
		A F	A F	A F	A F		
Land use, planning, and zoning	59%	36%	52%	42%	29%	41%	43%
	E		E				
Code enforcement (weeds, abandoned buildings, etc.)	36%	14%	41%	57%	32%	42%	37%
			B	B E		B	

Table 7: Utilities

Percent rating positively (e.g., excellent/good)	City Council District						Overall
	District 1	District 2	District 3	District 4	District 5	District 6	(A)
	(A)	(B)	(C)	(D)	(E)	(F)	
Overall quality of the utility infrastructure in Pasco (water, sewer, storm water, electric/gas)	89% F	76%	72%	84% F	71%	58%	74%
Affordable high-speed internet access	10%	56% A	38% A	55% A	38% A	78% A C E	45%
Garbage collection	77%	77%	83%	83%	96% A B	96%	86%
Drinking water	67%	88% E	90% A E	86%	69%	90% A E	82%
Sewer services	68%	93% A E	90% A E	84%	69%	78%	81%
Storm water management (storm drainage, dams, levees, etc.)	41%	73% A	84% A E	91% A E	54%	75% A	71%
Utility billing	11%	87% A D E F	77% A D E F	42% A	59% A F	21%	54%

Table 8: Safety

Percent rating positively (e.g., excellent/good, very/somewhat safe)	City Council District						Overall
	District 1	District 2	District 3	District 4	District 5	District 6	(A)
	(A)	(B)	(C)	(D)	(E)	(F)	
Overall feeling of safety in Pasco	45%	33%	75% A B	62% B	78% A B	77% A B	64%
Police/Sheriff services	69%	49%	79% B F	82% B F	93% A B F	52%	73%
Crime prevention	62%	49%	76% B F	58%	63%	43%	61%
Animal control	10%	82% A D E F	72% A D F	34%	57% A F	25%	53%

# The National Community Survey™ - Geographic Subgroup Report

Percent rating positively (e.g., excellent/good, very/somewhat safe)	City Council District						Overall
	District 1	District 2	District 3	District 4	District 5	District 6	(A)
	(A)	(B)	(C)	(D)	(E)	(F)	
Ambulance or emergency medical services	56%	99% A D F	89% A	74%	86% A	74%	82%
Fire services	57%	99% A D	90% A	76%	88% A	85% A	85%
Fire prevention and education	66%	78%	76% E	68%	50%	81% E	69%
Emergency preparedness (services that prepare the community for natural disasters or other emergency situations)	30%	43%	63% A D	19%	40%	44%	43%
In your neighborhood during the day	77%	78%	94% A B	93% A	94% A B	96% A B	90%
In Pasco's downtown/commercial area during the day	97% B C D E F	55%	65%	65%	69% F	45%	66%
From property crime	70% F	74% F	66% F	68% F	76% F	25%	65%
From violent crime	47%	68%	61%	69%	71%	47%	62%
From fire, flood or other natural disaster	77%	83%	91%	95% A	88%	91%	88%

Table 9: Natural Environment

Percent rating positively (e.g., excellent/good)	City Council District						Overall
	District 1	District 2	District 3	District 4	District 5	District 6	(A)
	(A)	(B)	(C)	(D)	(E)	(F)	
Overall quality of natural environment in Pasco	66%	41%	55%	56%	73% B	83% B C D	61%
Cleanliness of Pasco	45%	23%	67% B E F	53% B	38%	39%	47%
Water resources (beaches, lakes, ponds, riverways, etc.)	38%	63%	61%	63%	68% A	71% A	62%

## The National Community Survey™ - Geographic Subgroup Report

Percent rating positively (e.g., excellent/good)	City Council District						Overall
	District 1	District 2	District 3	District 4	District 5	District 6	(A)
	(A)	(B)	(C)	(D)	(E)	(F)	
Air quality	45%	89% A C	63%	70% A	82% A C	71% A	71%
Preservation of natural areas (open space, farmlands and greenbelts)	67% B	22%	43%	72% B C E F	44%	43%	49%
Pasco open space	67% C	64% C	38%	66% C	58%	42%	54%
Recycling	1%	54% A C D F	20%	11%	39% A C D F	10%	24%
Yard waste pick-up	41%	27%	62% B	67% B F	78% A B F	39%	55%

Table 10: Parks and Recreation

Percent rating positively (e.g., excellent/good)	City Council District						Overall
	District 1	District 2	District 3	District 4	District 5	District 6	(A)
	(A)	(B)	(C)	(D)	(E)	(F)	
Overall quality of the parks and recreation opportunities	62%	39%	64% B	63%	72% B F	44%	59%
Availability of paths and walking trails	3%	38% A	61% A B	62% A B	81% A B C	73% A B	57%
City parks	39%	73% A D	64% A	46%	59%	52%	57%
Recreational opportunities	14%	25%	45% A	65% A B	43% A	43%	43%
Recreation programs or classes	38%	31%	47%	58%	51%	33%	44%
Recreation centers or facilities	30%	24%	42% F	22%	51% B D F	16%	32%
Fitness opportunities (including exercise classes and paths or trails, etc.)	3%	50% A	55% A	77% A B C F	69% A F	43% A	53%

Table 11: Health and Wellness

Percent rating positively (e.g., excellent/good, excellent/very good)	City Council District						Overall
	District 1	District 2	District 3	District 4	District 5	District 6	(A)
	(A)	(B)	(C)	(D)	(E)	(F)	
Overall health and wellness opportunities in Pasco	37%	41%	45%	62%	42%	44%	46%
Health services	38%	25%	52% B	77% A B C E	41%	71% A B E	51%
Availability of affordable quality health care	9%	54% A	53% A	61% A	54% A	71% A	52%
Availability of preventive health services	11%	63% A	53% A	57% A	56% A	72% A	53%
Availability of affordable quality mental health care	8%	31%	25%	21%	47% A D	42% A	29%
Availability of affordable quality food	39%	59%	72% A F	72% A	85% A B F	48%	66%
Would you say that in general your health is:	69%	63%	80% D F	60%	72%	56%	68%

Table 12: Education, Arts, and Culture

Percent rating positively (e.g., excellent/good)	City Council District						Overall
	District 1	District 2	District 3	District 4	District 5	District 6	(A)
	(A)	(B)	(C)	(D)	(E)	(F)	
Overall opportunities for education, culture, and the arts	37%	37%	46%	56%	55%	47%	47%
Opportunities to attend cultural/arts/music activities	60% B D E F	34%	40% F	20%	29%	13%	33%
Community support for the arts	38%	29%	42% F	22%	32%	11%	30%
Availability of affordable quality childcare/preschool	9%	28%	38% A	35%	46% A F	13%	30%
K-12 education	12%	65% A F	54% A F	71% A F	80% A C F	13%	54%
Adult educational opportunities	51%	69% C F	39%	53%	58%	38%	51%

## The National Community Survey™ - Geographic Subgroup Report

Percent rating positively (e.g., excellent/good)	City Council District						Overall
	District 1	District 2	District 3	District 4	District 5	District 6	(A)
	(A)	(B)	(C)	(D)	(E)	(F)	
Opportunities to attend special events and festivals	60% F	44%	54% F	43%	51% F	20%	47%
Public library services	75% F	95% C F	72% F	77% F	79% F	49%	75%

Table 13: Inclusivity and Engagement

Percent rating positively (e.g., excellent/good)	City Council District						Overall
	District 1	District 2	District 3	District 4	District 5	District 6	(A)
	(A)	(B)	(C)	(D)	(E)	(F)	
Residents' connection and engagement with their community	32%	17%	51% B F	34%	32%	16%	33%
Sense of community	34%	24%	56% B	35%	51% B	42%	43%
Sense of civic/community pride	8%	50% A F	33% A	32%	40% A F	12%	31%
Neighborliness of residents in Pasco	37%	54% D	42%	26%	68% A C D	67% A C D	49%
Pasco as a place to raise children	39%	90% A F	78% A F	77% A F	82% A F	53%	73%
Pasco as a place to retire	17%	45% A	69% A B	68% A	55% A	50% A	54%
Openness and acceptance of the community toward people of diverse backgrounds	38%	34%	39%	61% B	72% A B C F	46%	49%
Making all residents feel welcome	63%	86% E F	71% E F	65%	46%	46%	63%
Attracting people from diverse backgrounds	40%	34%	64% A B F	80% A B E F	53%	29%	54%
Valuing/respecting residents from diverse backgrounds	46%	81% A F	62%	83% A C F	79% A F	45%	67%

## The National Community Survey™ - Geographic Subgroup Report

Percent rating positively (e.g., excellent/good)	City Council District						Overall
	District 1	District 2	District 3	District 4	District 5	District 6	(A)
	(A)	(B)	(C)	(D)	(E)	(F)	
Taking care of vulnerable residents (elderly, disabled, homeless, etc.)	11%	32%	56% A B F	58% A B F	62% A B F	26%	44%
Opportunities to participate in social events and activities	60% E	37%	45%	35%	22%	54% E	42%
Opportunities to volunteer	67% E	49%	52%	56%	33%	84% B C E	55%
Opportunities to participate in community matters	38%	18%	44% B	47% B	27%	30%	34%

Table 14: Participation

Percent rating positively (e.g., yes in the last 12 months)	City Council District						Overall
	District 1	District 2	District 3	District 4	District 5	District 6	(A)
	(A)	(B)	(C)	(D)	(E)	(F)	
Contacted the City of Pasco (in-person, phone, email, or web) for help or information	38%	50% F	54% D F	32%	58% D F	16%	44%
Contacted Pasco elected officials (in-person, phone, email, or web) to express your opinion	3%	22% A D E F	14% D	1%	8%	1%	9%
Attended a local public meeting (of local elected officials like City Council or County Commissioners, advisory boards, town halls, HOA, neighborhood watch, etc.)	26%	20%	22%	15%	14%	38% D E	22%
Watched (online or on television) a local public meeting	26%	40% D	26%	10%	22%	40% D	26%
Volunteered your time to some group/activity in Pasco	8%	45% A E	37% A	29%	19%	50% A E	31%
Campaigned or advocated for a local issue, cause, or candidate	2%	21%	14%	14%	9%	37% A C D E	15%
Voted in your most recent local election	65% B	20%	80% B	89% A B E F	68% B	63% B	68%

Table 15: Online Engagement

Percent rating positively (e.g., at least once every few weeks)	City Council District						Overall
	District 1	District 2	District 3	District 4	District 5	District 6	(A)
	(A)	(B)	(C)	(D)	(E)	(F)	
Access the internet from your home using a computer, laptop, or tablet computer	98% C	84%	81%	98% B C	99% B C	96% C	92%
Access the internet from your cell phone	99% D	90%	88%	80%	96% D	93%	90%
Visit social media sites such as Facebook, Twitter, WhatsApp, etc.	91%	88%	76%	89%	74%	90%	83%
Use or check email	93%	91%	97%	94%	90%	93%	93%
Share your opinions online	60% C E	33%	32%	59% B C E	34%	55%	43%
Shop online	74%	92% F	76%	89% F	79%	65%	80%

Table 16: Community Focus Areas

Percent rating positively (e.g., essential/very important)	City Council District						Overall
	District 1	District 2	District 3	District 4	District 5	District 6	(A)
	(A)	(B)	(C)	(D)	(E)	(F)	
Overall economic health of Pasco	71%	97% A	96% A	91% A	94% A	99% A	92%
Overall quality of the transportation system (auto, bicycle, foot, bus) in Pasco	69%	80%	77%	67%	70%	93% D E	75%
Overall design or layout of Pasco's residential and commercial areas (e.g., homes, buildings, streets, parks, etc.)	71%	93% A D	94% A D	70%	95% A D	95% A D	87%
Overall quality of the utility infrastructure in Pasco (water, sewer, storm water, electric/gas)	100% C	93% C	80%	95% C	96% C	96% C	92%
Overall feeling of safety in Pasco	99%	93%	89%	95%	95%	98%	94%
Overall quality of natural environment in Pasco	99% E	93%	86%	85%	79%	97% E	88%
Overall quality of the parks and recreation opportunities	98% E	96% E	89%	91%	81%	96% E	91%

# The National Community Survey™ - Geographic Subgroup Report

Percent rating positively (e.g., essential/very important)	City Council District						Overall
	District 1	District 2	District 3	District 4	District 5	District 6	(A)
	(A)	(B)	(C)	(D)	(E)	(F)	
Overall health and wellness opportunities in Pasco	100% D E	93% D	91% D E	67%	77%	95% D E	86%
Overall opportunities for education, culture and the arts	70%	96% A	87%	91% A	82%	90% A	86%
Residents' connection and engagement with their community	99% D E F	80%	80%	70%	68%	66%	76%

Table 17: Cultural Enrichment

Percent rating positively (e.g., excellent/good).	City Council District						Overall
	District 1	District 2	District 3	District 4	District 5	District 6	(A)
	(A)	(B)	(C)	(D)	(E)	(F)	
Opportunities for cultural enrichment	36%	38%	41%	32%	35%	18%	35%

Table 18: Public Art Projects

Percent rating positively (e.g., support/somewhat support)	City Council District						Overall
	District 1	District 2	District 3	District 4	District 5	District 6	(A)
	(A)	(B)	(C)	(D)	(E)	(F)	
Pasco recently formed an Arts and Culture Commission. The Commission will be responsible for finding funding and resources to create several public art projects. To what extent do you support or oppose using public funds to help pay for public art projects?	76%	98% C E	69%	90% C E	64%	89% C E	78%

Table 19: Affordable Housing

The City of Pasco is exploring ways to take action to increase the development/supply of more affordable housing units. To what extent would you support or oppose the City exploring each the following options? (Percent strongly support/somewhat support).	City Council District						Overall
	District 1	District 2	District 3	District 4	District 5	District 6	(A)
	(A)	(B)	(C)	(D)	(E)	(F)	
Provide incentives for the development of housing that is affordable to more households (lower price points)	100% C E	82% E	73%	89% E	57%	85% E	78%
Implement zoning initiatives to increase housing supply and options through increased density or building types	98% C E F	70% E	66% E	74% E	41%	56%	65%
Allocate public funding to create additional affordable housing	90% C E	80% C E	47%	68% C E	33%	82% C E	61%
Let the market decide	48%	47%	59%	40%	86% A B C D F	56%	57%

Table 20: Downtown Engagement

How likely, if at all, would each of the following be to bring you to downtown more often? (Percent very likely/somewhat likely).	City Council District						Overall
	District 1	District 2	District 3	District 4	District 5	District 6	(A)
	(A)	(B)	(C)	(D)	(E)	(F)	
More cultural opportunities	98% C D E	90% D E	75% E	69%	55%	91% D E	77%
More unique dining opportunities	71%	97% A E	97% A E	88% E	64%	91% A E	85%
More national chain restaurants	97% C D E	92% C D E	68% E	54%	49%	88% D E	71%
More service-oriented businesses (e.g., spa/nail/esthetician services, beer/wine bar, coffee café, dry cleaner, etc.)	56%	51%	75% B E	68%	52%	67%	63%
More children/youth opportunities	96% B C D E F	68%	66%	51%	58%	69%	66%