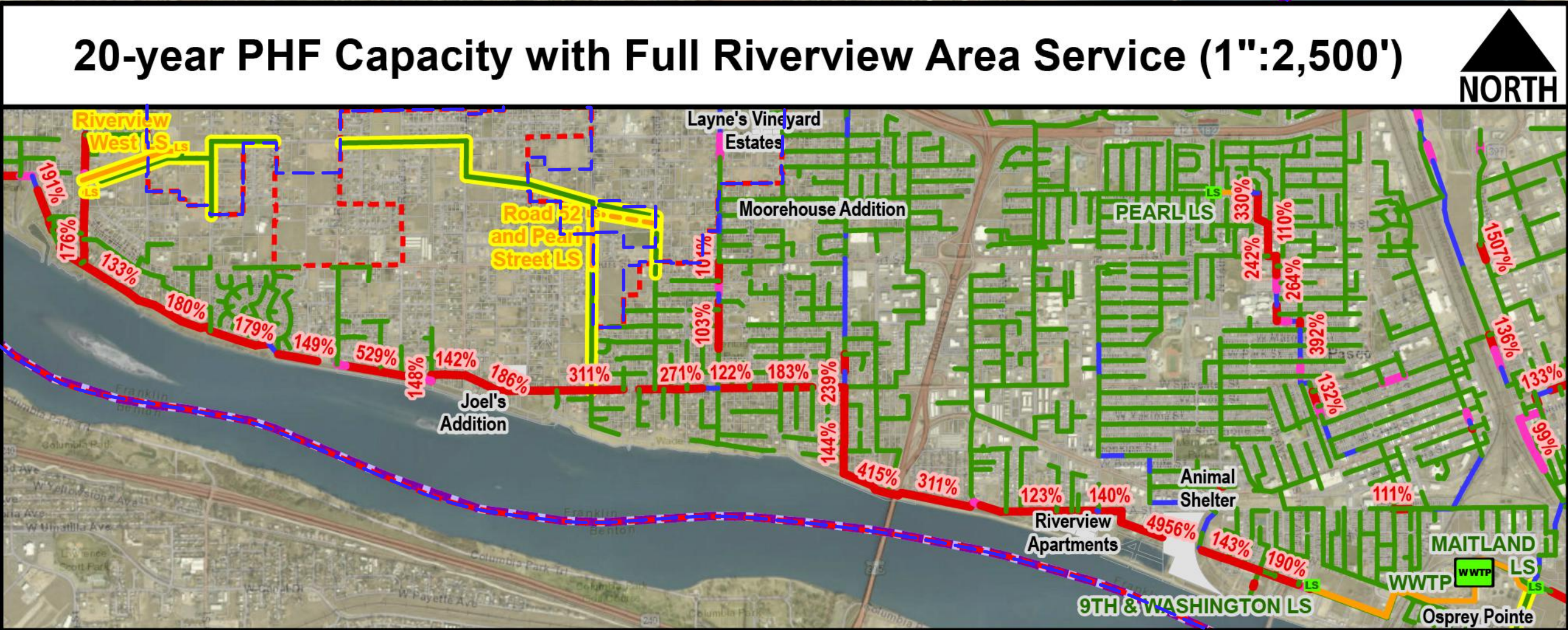


Area Name	10-Year Units	10-Year Population	20-Year Units	20-Year Population
NW Sewer LID	3,124	9,903	3,124	9,903
Other Near-Term Development	2,087	6,616	2,087	6,616
Osprey Pointe	581	1,842	581	1,842
Additional Infill Within Existing Sewer System Footprint	252	800	567	1,797
West Broadmoor	180	571	2,397	7,598
West UGA Expansion	694	2,200	1,744	5,530
Central UGA Expansion	509	1,611	2,561	8,117
East UGA Expansion	95	301	2,156	6,835
Total Projections	7,522	23,844	15,217	48,238



This map is a graphic representation derived from various Geographic Information Systems. It was designed and intended for City of Pasco staff use only; it is not guaranteed to survey accuracy. This map is based on the best information available on the date shown on this map.

Any reproduction or sale of this map, or portions thereof, is prohibited without express written authorization by the City of Pasco.

This material is owned and copyrighted by the City of Pasco.



Figure 4-6: 20-year PHF Capacity with Existing Pipe Sizes
(Main View: No Riverview; Inset: Full Riverview)
City of Pasco
Addendum to the CSP